

# Bonfiglioli Solutions - Power

11 Sep 2024

Hyderabad

Sivakumar Natarajan

Application Engineering  
I & AS Business Unit

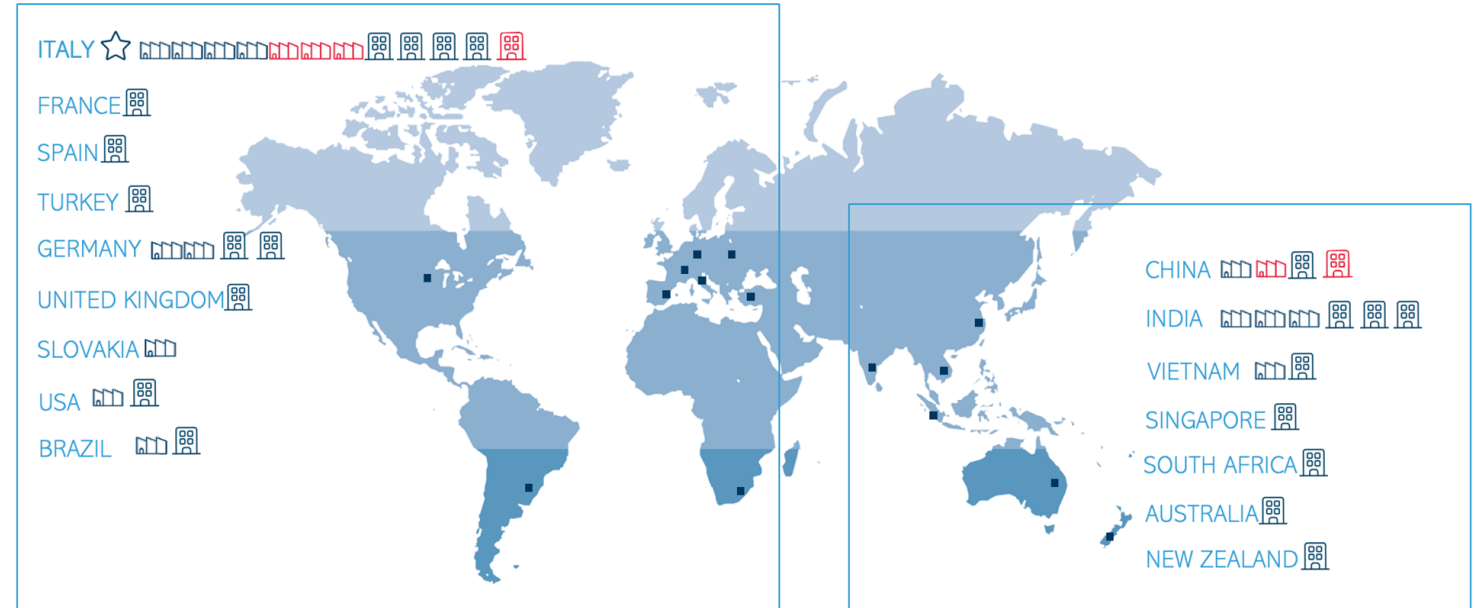


*We engineer dreams*

# Market Leader in Power Transmission Portfolio with Global Footprint



Headquarters in Calderara di Reno, Italy



☆ HEADQUARTERS
🏭 PRODUCTION SITES
🏢 COMMERCIAL SITES
🏠 SELCOM GROUP

**15** PRODUCTION SITES  
**24** COMMERCIAL SITES  
**80** COUNTRIES  
**~4.000** PEOPLE

# 25 Years of Commitment in India



# Engineered Solutions: Driving India Growth Story



4 State of Art Factory



All India Service



India Design Centre



> 1000 People

## Keep the World in Motion



18 Sales Offices



Centre of Excellence-Application

## Make in India

- India for India
- India for Global

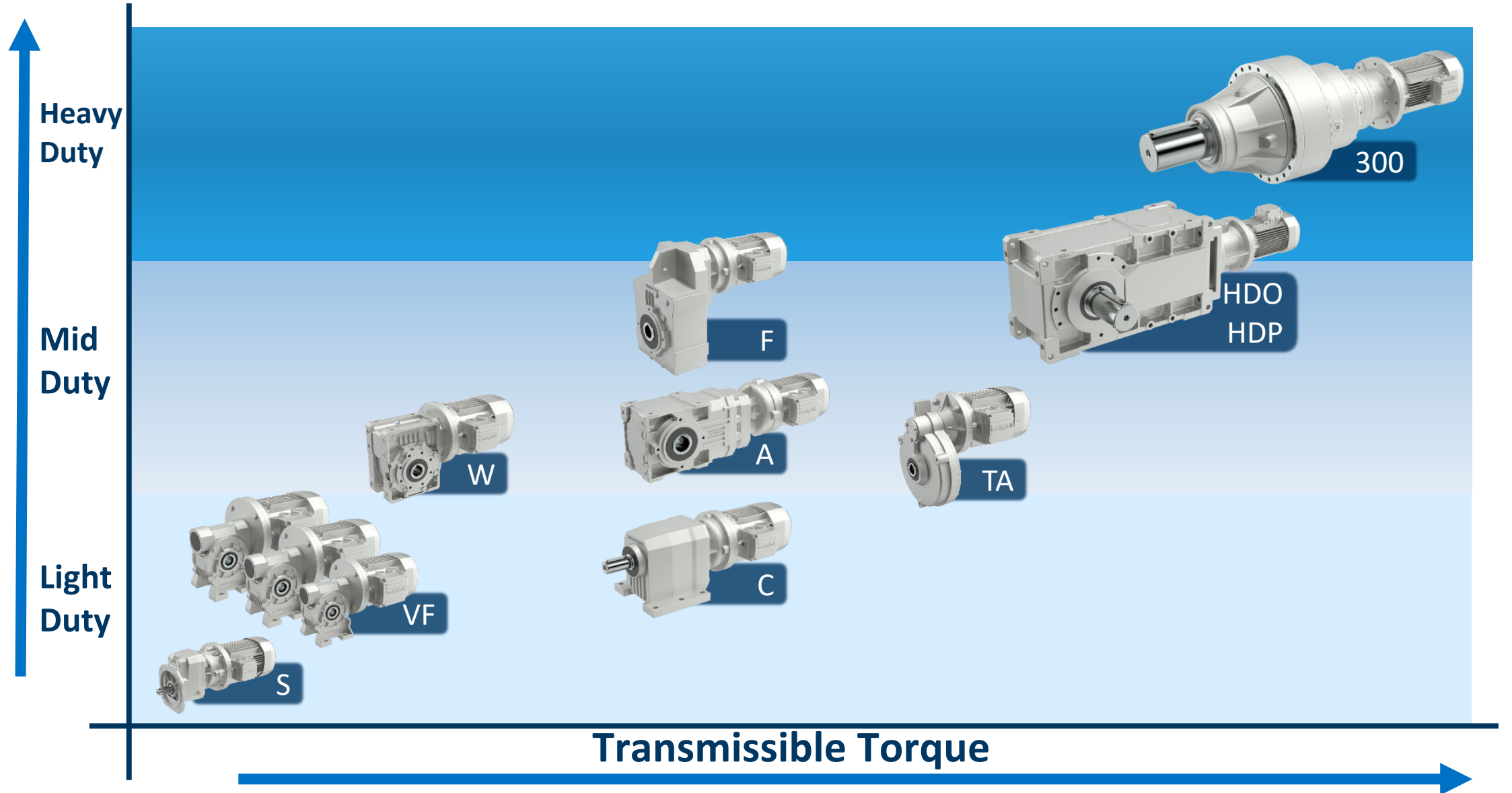


40 +Sales Partners



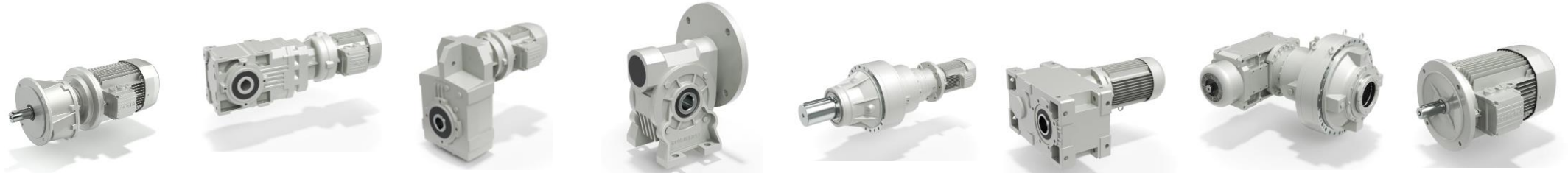
Dedicated After Sales Team

# Positioning of Light & Medium Gearboxes among Bonfiglioli products



# Bonfiglioli Product Range

## Gear Motors and Gear Box



	<b>AS/C</b>	<b>A</b>	<b>F</b>	<b>VF/W</b>	<b>300</b>	<b>HD</b>	<b>Combined</b>	<b>Motors</b>
<b>Type</b>	In-Line Helical	Bevel Helical	Parallel Shaft Helical	Worm	Planetary	Heavy Duty Bevel Helical	Heavy Duty – Planetary / Helical	IE2, IE3, BSR
<b>Torque Range (Nm)</b>	45....12000	100....14000	140..14000	13....7100	1250.... 12,90,000	5190.... 209,900	100,000.... 12,90,000	0.37 .... 22KW
<b>Mech Rating kW @ 1400RPM</b>	0.08..213	0.22..151	0.17..123	0.03..55	0.07 ..200	8.. 2796	10 .. 867	
<b>Ratios</b>	2.6..1481	5.4 ..1715	6.4..2188	7...10000	3.48..5000	7..534	18.1..5234	

# MARKETS WE SERVE

## Power Plants



- Wagon Tippers
- Side Arm Chargers
- Stacker / Reclaimer
- Apron Feeders
- Pan Conveyors
- Crushers / Mills
- Bulk Reception Units
- Paddle Feeders
- Coal and Ash Handling Systems
- Pan Conveyors
- Electrostatic Precipitators

## OEM & END USER REFERENCE



# Case Study; Conventional Bevel Helical Vs Planetary

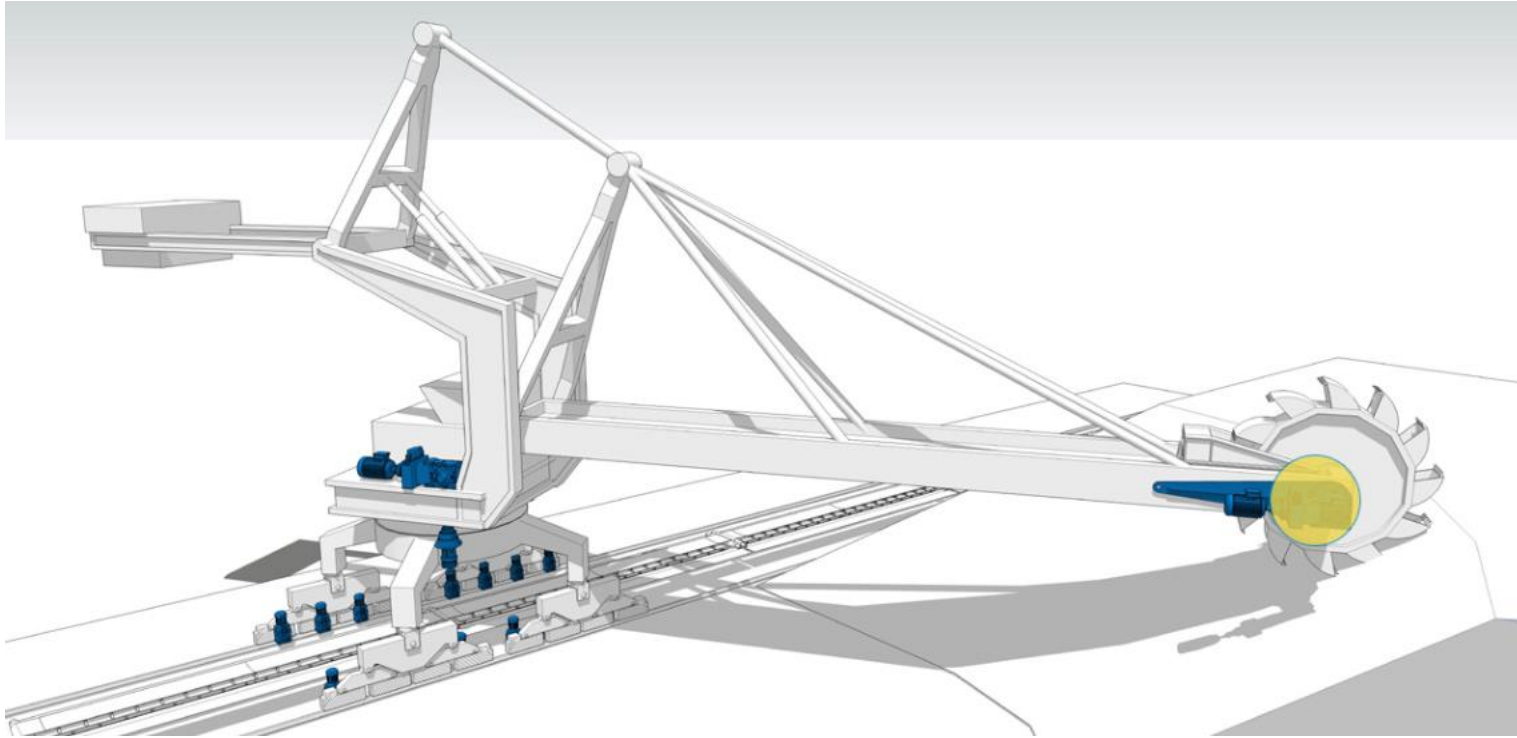
Applications – BRU, Apron Feeder and Pan Conveyor

	<b>Equivalent model of Bonfiglioli</b>	<b>Planetary solution (Bonfiglioli)</b>
<b>Model Configuration</b>	HDO 140+ AS 80 + BE 160M 4	3 15 L 4 + TA + BE 160M 4
<b>Ratio</b>	1123	1104
<b>Mn2 (Nm)</b>	87,060	94,800
<b>Pn1 (kw)</b>	11	11
<b>Weight in kgs (Approx)</b>	2250	800
<b>Oil quantity</b>	100	22
<b>Oil change frequency</b>	12500 h	12500 h
<b>List Price per unit (Without motor)</b>	2,892,000	1,650,000
<b>Overall life hours (Gears)</b>	> 50,000	> 50,000
<b>Overall life hours (Bearings)</b>	> 50,000	> 50,000
<b>Efficiency</b>	87%	88%
<b>No of stages</b>	6	4

- Planetary gear units weigh lesser and use lesser lubrication oil
- Low initial cost and total cost of ownership



# Stacker and Reclaimer



Major Customers

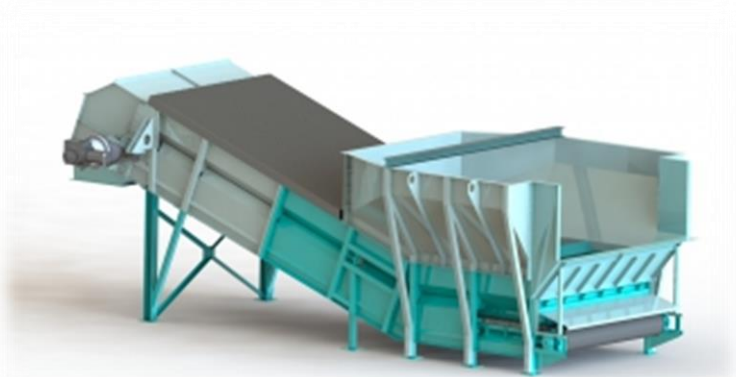


# Feeders



## Apron Feeder – Mining

Product : 3 17- 02 No's  
Supply Year : 2021  
Project: NALCO



## Bulk Reception Unit Coal / Iron Ore

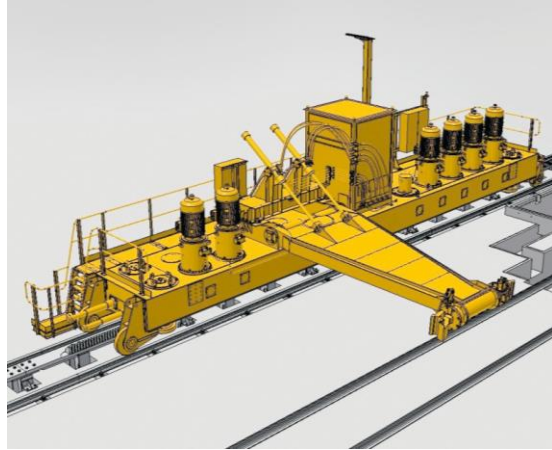
Project: NTPC - FGD  
Product : X\_3 17 + BE  
180 M4 415-50 CLF  
B5  
Supply Year : 2020

## Truck Unloading System



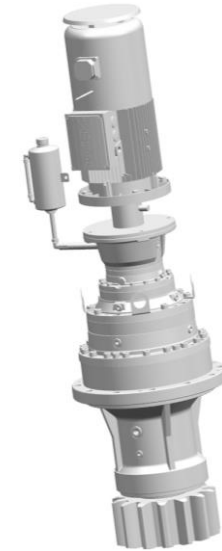
Project: NTPC Unchahar  
Product : 3 14 + IEC Backstop - 03 No's  
Supply Year : 2021  
  
Product : 3 14 + TA + Siemens IE3 15  
KW Motor - 03 Nos  
Supply Year : 2020  
End User: Chettinad Cement – Dachepalli

# Coal Handling



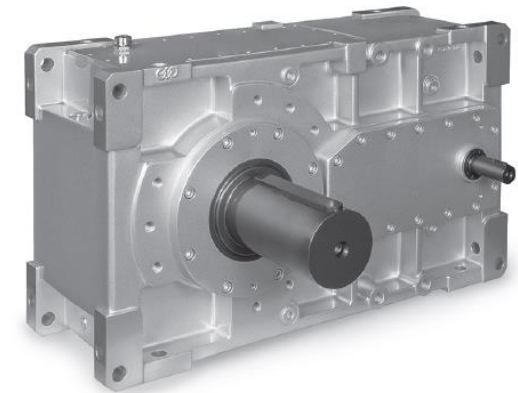
## Side arm charger

Product: 3 13 L2  
Quantity: 26 Nos  
Sector: Steel and Power



## Wagon Tippler

Product: Helical / Planetary  
Quantity: 2 Nos  
Supply Year: 2013  
End User: Steel and Power



# Coal / Ash Handling Plants

Pan Conveyor / Belt conveyors



Application – Pan Conveyor (Ash)  
Project - NTPC  
Model - 3 19 R 4 401 FP P280 B0 G0A  
Power - 55 kW / 2.5 rpm  
Rated Torque – 384,100 Nm  
Accessories – Torque Arm, Shrink Disc



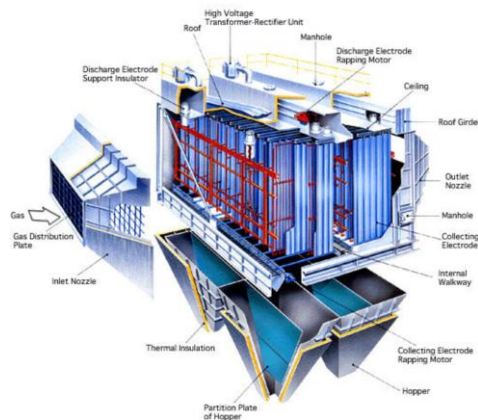
Application – Belt Conveyor  
Model – HDO 100 3 25  
Power - 75 kW / 59 rpm  
Rated Torque – 24,300 Nm  
Accessories – Brake, Fluid coupling

# Paddle Feeder / ESP

3 00 L 4 447 PC P71 E BE 71B 4 230/400



Application – Paddle Feeder  
Model – 3 / H 17 O L2 89.6 FZ  
Type – Planetary & Bevel Helical  
Power - 132 kW / 11 rpm  
Rated Torque – 157,000 Nm  
Accessories – Axial fan, Motorised Pump



Application – ESP  
Model – 300 L 4  
Power - 0.37 kW / 3.2 rpm  
Rated Torque – 1,300 Nm  
Speciality – 4 and 5 stage Planetary

# Other Important Projects



Apron Feeder



- Model: 3 17 R4, 3/H 17
- Type – Helical Planetary



Railway Wheel Machining



- Model: A 35 & F 60
- Type – Bevel Helical



Bulk Reception Unit



- Model: 3 11 – 3 17 R4
- Type – Bevel Planetary



Reactors / Agitators



- Model: HDO 120 / 125
- Type - Vertical Helical



Travel Drive



- Model: A 70, 80 and 90
- Type - Helical - Bevel



Desolventizer Toaster



- Model: HDO 180
- Type- Bevel - Helical



Vertical Crystalliser



- Model: 3 18 L5
- Type - Planetary



Spherical Drier



- Model: HDP 150
- Type – Vertical Helical



PSLV 9 - Launching pad



- Model: RAN 18
- Type – Bevel (RAN series)

**THANK YOU**

*We engineer dreams*

 **Bonfiglioli**